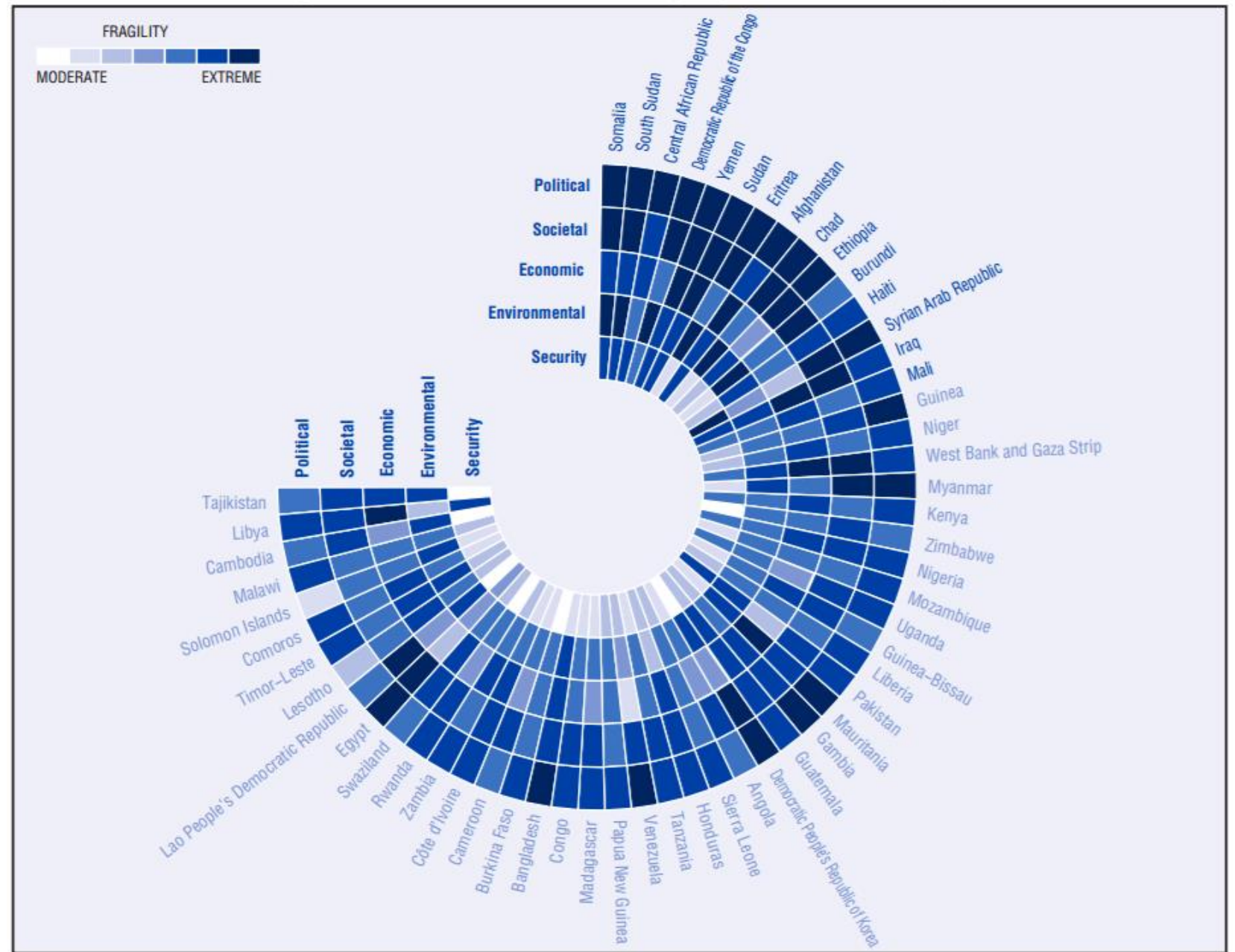




Reaching the Last Mile: Four Shifts to Leave No One Behind

Shift I:

From
Universal to
Fragile
Contexts



2016 OECD fragility
framework diagram »

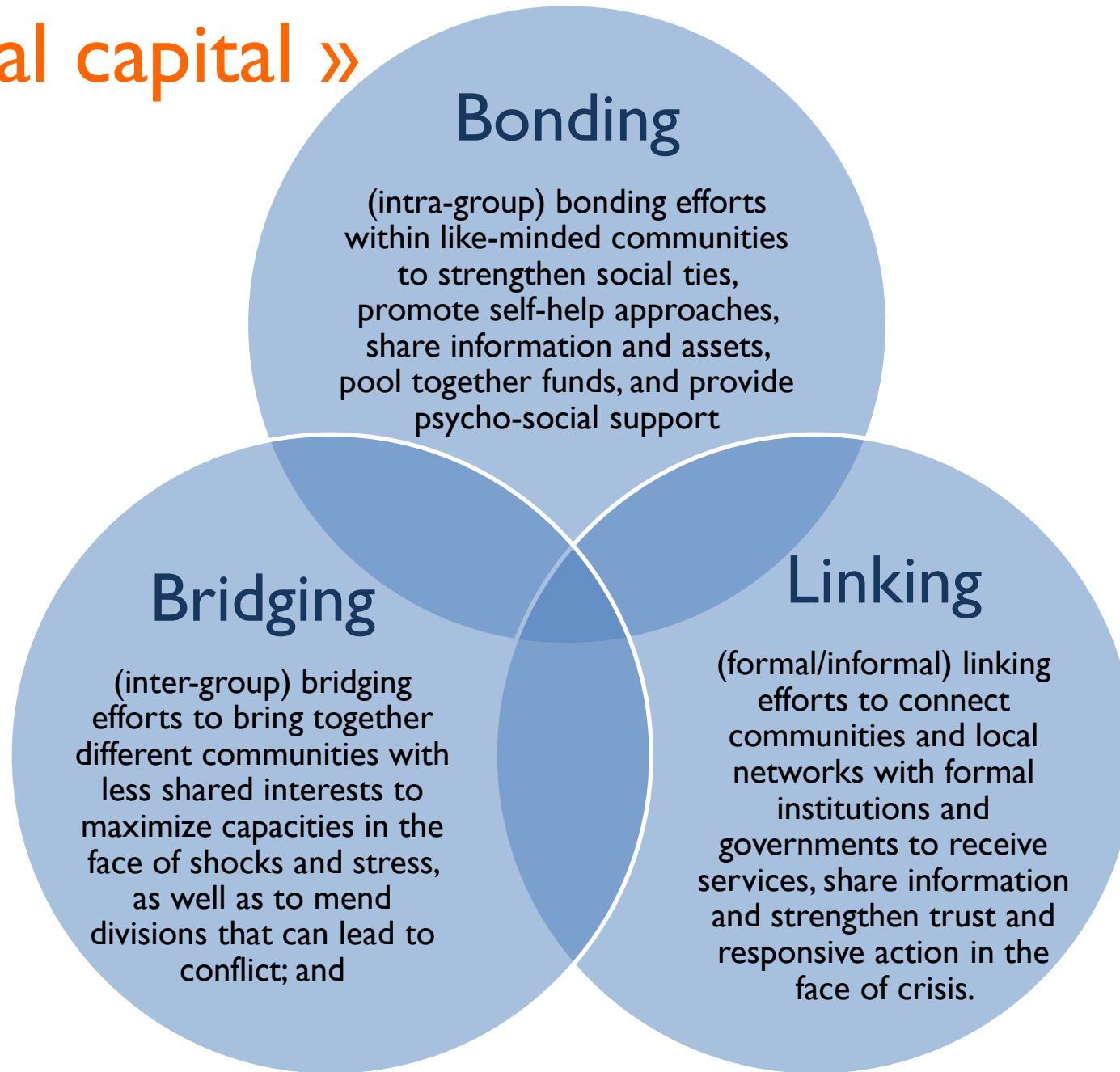
Shift 2: From Needs to Risks»

"Fragility is defined as the combination of exposure to risk and insufficient coping capacity of the state, system and/or communities to manage, absorb or mitigate those risks."

-OECD 2016

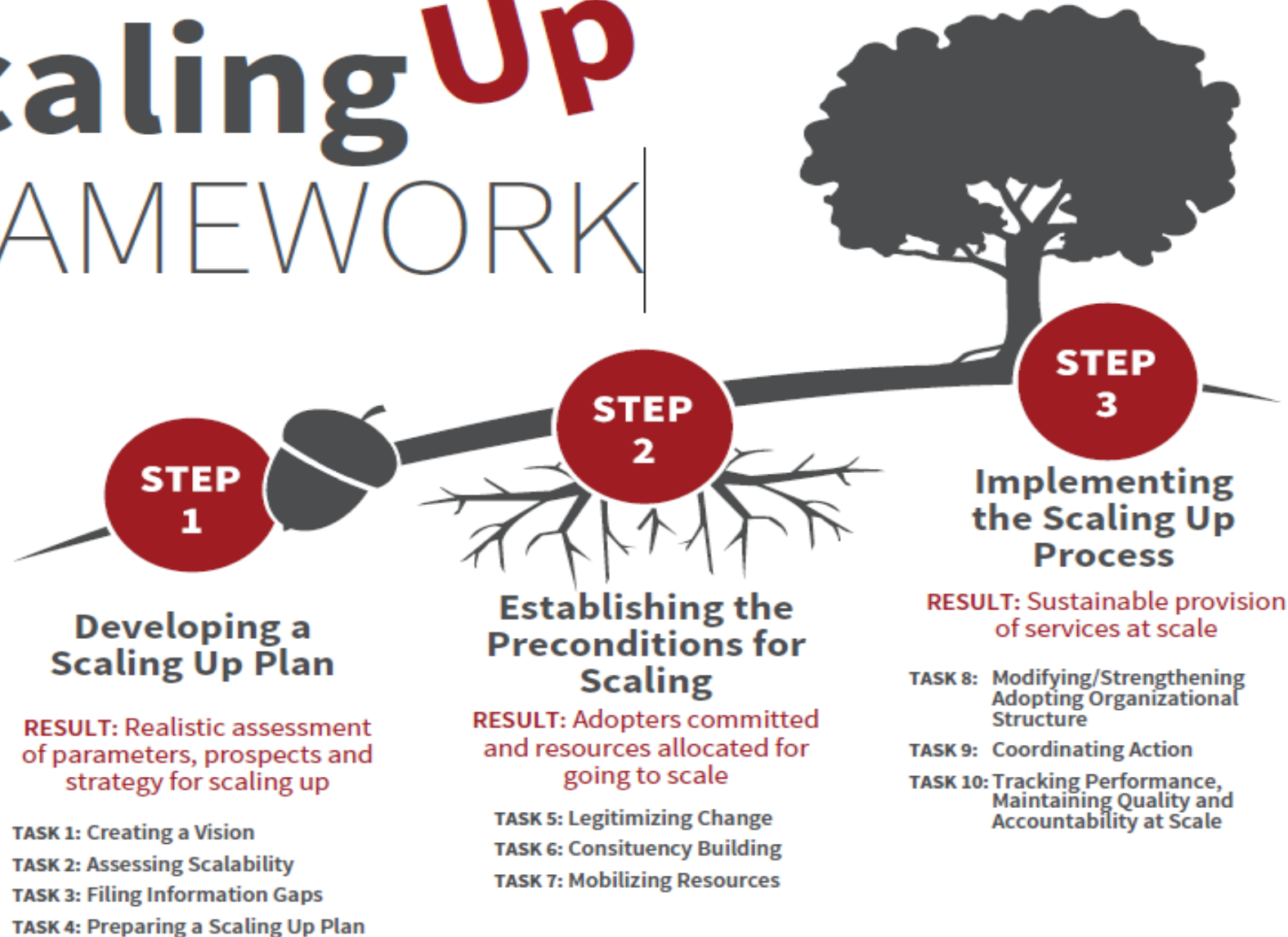


Scaling social capital »



Shift 3: From Projects to Scaled Outcomes

Scaling Up FRAMEWORK



Shift 4: From traditional pathways to hybrid “ecosystems”



Afghanistan Basic Package of Health Services

- Government- led consortia
- International implementing partners
- Community empowerment
- Donor pooled funds



Core Group Polio Project

- INGO-led consortia, global secretariat, multiple country secretariats
- Community health workers report to project and government
- USAID major donor + additional donors



Somalia Resilience Program

- INGO-led consortia with multiple local partners
- Close alignment with government, inputs into national strategy, facilitates stakeholder discussions
- Donor advisory group/pooled funds

Thank you!

Jonathan Papoulidis

Executive Advisor on Fragile States, World Vision

jpapouli@worldvision.org

@jpapoulidis

World Vision[®]

